

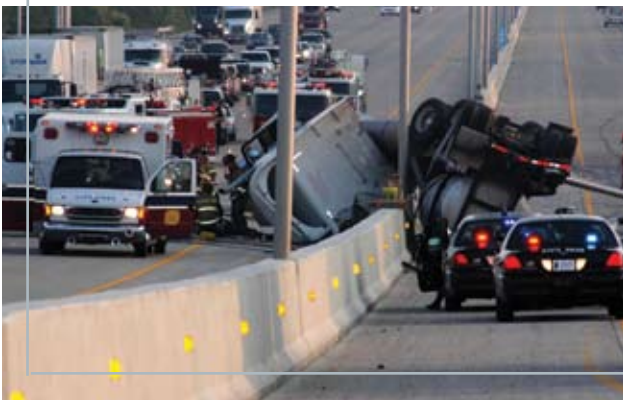


LifeGuard RollTek deploys within a quarter of a second to help protect firefighters involved in a rollover accident.

RollTek combines side airbag protection with the latest advancements in seat belt technology to reduce the potential for death or serious injury to firefighters during a rollover.

During the development of RollTek for fire apparatus, LifeGuard Technologies® engineers work with OEM engineers to determine airbag parameters and placement, carefully studying impact points from every angle before arriving at a solution that provides the greatest protection for firefighters.

In every stage of development, advanced testing at the Center for Advanced Product Evaluation (CAPE) plays an integral role in ensuring the quality, reliability and peak performance of each system component.



- Combines side airbag protection with the latest advancements in seat belt technology
- Minimizes occupant movement, increases survivable space and cushions head and neck impact
- Deploys within a quarter of a second
- Tested and demonstrated to dramatically increase the safety and survivability of fire apparatus in lateral rollovers



Increases **survivable** space in the cab

RollTek is a product of LifeGuard Technologies, a division of IMMI – the leading provider of advanced safety systems for fire apparatus. LifeGuard Technologies engineers work alongside the most trusted fire apparatus manufacturers, delivering advanced occupant protection products that are durable, reliable and designed to perform even in harsh environments.

## How it works

A sensor inside the cab continuously monitors the truck's position or angle, and if it detects an imminent rollover, it initiates up to three events per seating position.

1. The **buckle pretensioner** tightens the seat belt around occupants, positioning them securely in their seats.
2. The **seat pull-down system** pulls the suspension seats down to their lowest positions to increase survivable space.
3. **Side airbags** inflate in every outboard position on the truck to cushion head impact and reduce head and neck injuries during the rollover.

*Complete deployment = .234 sec.*



### Available on:

<b>Pierce:</b>	<b>Enforcer, Quantum, Dash, Lance, Arrow XT, Impel, Velocity</b>
<b>KME:</b>	<b>Predator</b>
<b>Ferrara:</b>	<b>Inferno, Igniter</b>
<b>Spartan:</b>	<b>Gladiator, MetroStar</b>
<b>Seagrave:</b>	<b>Marauder II</b>
<b>E-ONE:</b>	<b>The Quest</b>
<b>Sutphen:</b>	<b>All custom fire apparatus</b>
<b>HME:</b>	<b>All custom fire apparatus</b>

### CAPE Testing

The Center for Advanced Product Evaluation (CAPE) houses a unique rollover test machine for evaluating commercial vehicle and bus rollovers. Tests are conducted regularly to measure product performance and occupant kinematics in simulated rollover events. This testing enables LifeGuard Technologies® to build technologically advanced products and work with apparatus manufacturers as they integrate RollTek into vehicles and work to improve the overall safety and integrity of cabs. Apparatus first go through baseline rollover testing at CAPE without RollTek, then undergo a series of advanced rollover tests with RollTek deployed to ensure the system meets all design requirements for advanced occupant protection.



A Division of IMMI

18881 U.S. 31 North | Westfield, IN | 46074-0408 | USA

☎ 866.765.5835 | 📞 317.896.2142

[lifeguardtechnologies.com](http://lifeguardtechnologies.com)